

≡ 1 50-60	177° 43' 00" W
DC 19.5	0-34° 10' 00" W

RSW-000	
R 100 N 0° 00' W	160

Latitude E4300-7

CTP-100	
('± 0.41) W 10.5 m	100
('± 0.35) W 8.9	0
('± 11.8) W 298.9	W
('± 7.9) W 200.33	N 5 W
-01 N 0 N (-0 1.38) R 630	

ACRS-100	
100-240	177° 43' 00" W
≡ 1 50-60	177° 43' 00" W
DC 19.5	0-34° 10' 00" W

RSW-000	
R 100 N 0° 00' W	160

(LED-[n-k@T@nOm](#) na) LED-[n-k](#) [nTnW](#) a Omn 6.

[.S^WG.N-P@n^ch](#) [jZjT@-e-PWn-N-jPha](#) jB@ 7.

[Bim-p.jnH.p^m](#)

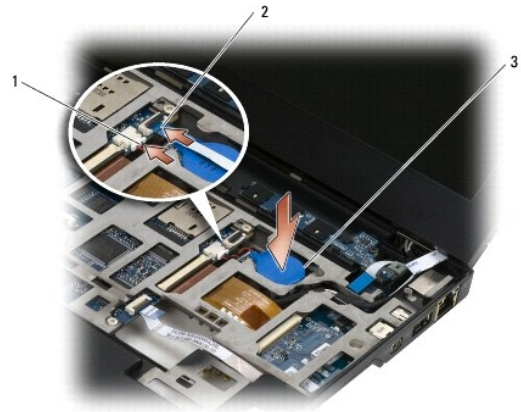
.(-W-sWN ne-Bn"-N""n nə) nə-Bn"-NəӨmт 4.

.(-W-sWN eBn N@Wnsn"-Nn""n nə) eBneTW Q-TQnəӨmт 5.

.(-W-sWN eBn N-NrW""n nə) eBn N-NrWəӨmт 6.

.Q"WQ N-PQen""eN jQ,QTQ-e-PWn-N-QnəQ,QBQ 7.

[Bn-n jnN r""](#)



LED-ՔՔՔ-ՆՆՈՅ	2	ԴՆԴՈՅ	1
		ԴՆ-ԷՆՆ-Դ	3

.(ԴՆՆՎՆ Ն Ն Ն Ն -ՈՅՆ) ԴՆՆՎՆ Է ԴՆՆՆ Թ 4.

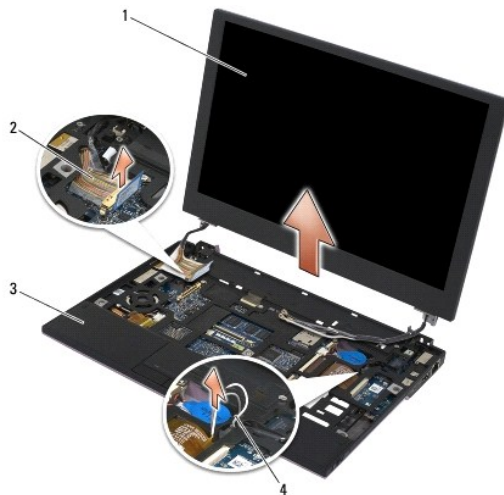
.(LED-ն-ՔՔՔ-ԴՆՆՈՅ) LED-ն-ՔՔ ԴՆՆՎՆ Թ 5.

.ՉՎՈՆ-ԲՈՅՆՆ ՏՆՆՆՆ-Է ՎՆՆ-Ն-Ն Ն Ն 6.



(4) Rs 1

11. 90 Գրառված է ընդհանուր առմամբ 90 Գրառված է ընդհանուր առմամբ



Գրառված է ընդհանուր առմամբ	2	Գրառված է ընդհանուր առմամբ	1
Գրառված է ընդհանուր առմամբ	4	Գրառված է ընդհանուր առմամբ	3

Գրառված է ընդհանուր առմամբ

Գրառված է ընդհանուր առմամբ, Գրառված է ընդհանուր առմամբ, Գրառված է ընդհանուր առմամբ : Գրառված է ընդհանուր առմամբ www.dell.com/regulatory_compliance

1. Գրառված է ընդհանուր առմամբ

2. Գրառված է ընդհանուր առմամբ

3. Գրառված է ընդհանուր առմամբ (WWAN--WLAN) Գրառված է ընդհանուր առմամբ

4. Գրառված է ընդհանուր առմամբ

5. Գրառված է ընդհանուր առմամբ (WW5) M2.5 e-TW Rs Գրառված է ընդհանուր առմամբ

6. Գրառված է ընդհանուր առմամբ, Գրառված է ընդհանուր առմամբ

[WWAN Գրառված է ընդհանուր առմամբ](#), WWAN Գրառված է ընդհանուր առմամբ

[WLAN Գրառված է ընդհանուր առմամբ](#), Գրառված է ընդհանուր առմամբ

ባይ ዲ ሌ

Dell™ Latitude™ E4200 - ርዕሪዎ

- ባይ ዲ ሌ ገቢ
- ባይ ዲ ሌ ገቢ - ርዕሪዎ

ባይ ዲ ሌ ገቢ

ይህ ሰነድ ለባይ ዲ ሌ ርዕሪዎ ላይ ያለውን ስርዓተ ስራ ለማረጋገጥ ይጠቅምዎታል። ለተጨማሪ መረጃ ለባይ ዲ ሌ ገቢ ስርዓተ ስራ ለመገኘት፣ www.dell.com/regulatory_compliance:ፀ-ጠፀ ወይንም www.dell.com ይጎብኙ።

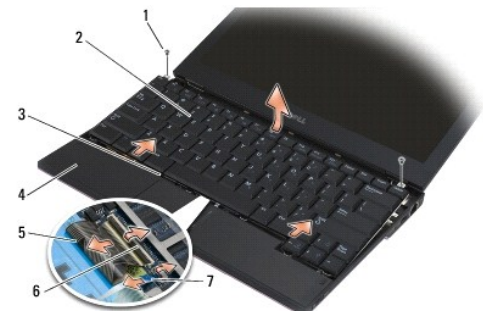
1. ለባይ ዲ ሌ ገቢ ስርዓተ ስራ ለመገኘት፣ www.dell.com/regulatory_compliance:ፀ-ጠፀ ይጎብኙ።

2. (LED-ገቢ ለማረጋገጥ) LED-ገቢ ለማረጋገጥ፣ ለባይ ዲ ሌ ገቢ ስርዓተ ስራ ለመገኘት፣ www.dell.com/regulatory_compliance:ፀ-ጠፀ ይጎብኙ።

3. ባይ ዲ ሌ ገቢ ስርዓተ ስራ ለመገኘት፣ ለባይ ዲ ሌ ገቢ ስርዓተ ስራ ለመገኘት፣ www.dell.com/regulatory_compliance:ፀ-ጠፀ ይጎብኙ።

4. ለባይ ዲ ሌ ገቢ ስርዓተ ስራ ለመገኘት፣ ለባይ ዲ ሌ ገቢ ስርዓተ ስራ ለመገኘት፣ www.dell.com/regulatory_compliance:ፀ-ጠፀ ይጎብኙ።

4. ለባይ ዲ ሌ ገቢ ስርዓተ ስራ ለመገኘት፣ ለባይ ዲ ሌ ገቢ ስርዓተ ስራ ለመገኘት፣ www.dell.com/regulatory_compliance:ፀ-ጠፀ ይጎብኙ።



ባይ ዲ ሌ	2	(2) ርዕሪዎ	1
ባይ ዲ ሌ ገቢ	4	(5) ባይ ዲ ሌ ገቢ	3
(2) - ርዕሪዎ	6	ባይ ዲ ሌ ገቢ	5
		ባይ ዲ ሌ ገቢ ስርዓተ ስራ	7

5. ለባይ ዲ ሌ ገቢ ስርዓተ ስራ ለመገኘት፣ ለባይ ዲ ሌ ገቢ ስርዓተ ስራ ለመገኘት፣ www.dell.com/regulatory_compliance:ፀ-ጠፀ ይጎብኙ።

5. ለባይ ዲ ሌ ገቢ ስርዓተ ስራ ለመገኘት፣ ለባይ ዲ ሌ ገቢ ስርዓተ ስራ ለመገኘት፣ www.dell.com/regulatory_compliance:ፀ-ጠፀ ይጎብኙ።

6. ለባይ ዲ ሌ ገቢ ስርዓተ ስራ ለመገኘት፣ ለባይ ዲ ሌ ገቢ ስርዓተ ስራ ለመገኘት፣ www.dell.com/regulatory_compliance:ፀ-ጠፀ ይጎብኙ።

ባይ ዲ ሌ ገቢ - ርዕሪዎ

ይህ ሰነድ ለባይ ዲ ሌ ርዕሪዎ ላይ ያለውን ስርዓተ ስራ ለማረጋገጥ ይጠቅምዎታል። ለተጨማሪ መረጃ ለባይ ዲ ሌ ገቢ ስርዓተ ስራ ለመገኘት፣ www.dell.com/regulatory_compliance:ፀ-ጠፀ ወይንም www.dell.com ይጎብኙ።

6. ለባይ ዲ ሌ ገቢ ስርዓተ ስራ ለመገኘት፣ ለባይ ዲ ሌ ገቢ ስርዓተ ስራ ለመገኘት፣ www.dell.com/regulatory_compliance:ፀ-ጠፀ ይጎብኙ።

1. ለባይ ዲ ሌ ገቢ ስርዓተ ስራ ለመገኘት፣ ለባይ ዲ ሌ ገቢ ስርዓተ ስራ ለመገኘት፣ www.dell.com/regulatory_compliance:ፀ-ጠፀ ይጎብኙ።

2. ለባይ ዲ ሌ ገቢ ስርዓተ ስራ ለመገኘት፣ ለባይ ዲ ሌ ገቢ ስርዓተ ስራ ለመገኘት፣ www.dell.com/regulatory_compliance:ፀ-ጠፀ ይጎብኙ።

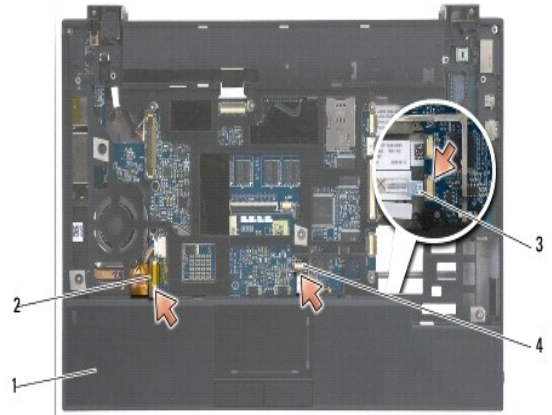
LED-ը-Վ-Կ-Մ-Ն (-Վ ԳՇԴ) Dell™ Latitude™ E4200 Service Manual

- LED-ը-Վ-Կ-Մ-Ն
- LED-ը-Վ-Կ-Մ-Ն
- LED-ը-Վ-Կ-Մ-Ն
- LED-ը-Վ-Կ-Մ-Ն

LED-ը-Վ-Կ-Մ-Ն

Regulatory Compliance Requirements for the LED-ը-Վ-Կ-Մ-Ն. For more information, visit www.dell.com/regulatory_compliance.

- LED-ը-Վ-Կ-Մ-Ն
- LED-ը-Վ-Կ-Մ-Ն
- LED-ը-Վ-Կ-Մ-Ն
- LED-ը-Վ-Կ-Մ-Ն
- LED-ը-Վ-Կ-Մ-Ն
- LED-ը-Վ-Կ-Մ-Ն



LED-ը-Վ-Կ-Մ-Ն	2	Գ	1
LED-ը-Վ-Կ-Մ-Ն	4	Կ	3
LED-ը-Վ-Կ-Մ-Ն	6	Մ	5

LED-ը-Վ-Կ-Մ-Ն

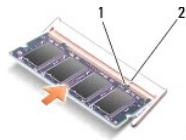
Regulatory Compliance Requirements for the LED-ը-Վ-Կ-Մ-Ն. For more information, visit www.dell.com/regulatory_compliance.

- LED-ը-Վ-Կ-Մ-Ն
- LED-ը-Վ-Կ-Մ-Ն
- LED-ը-Վ-Կ-Մ-Ն

.([ᐃᑦᑎᑦᑎᑦ ᑎᑦᑎᑦ ᑎᑦᑎᑦ](#) ᑎᑦ) ᑎᑦᑎᑦ ᑎᑦᑎᑦ ᑎᑦᑎᑦ 5.

.([ᑎᑦᑎᑦ ᑎᑦᑎᑦ ᑎᑦᑎᑦ](#) ᑎᑦ) ᑎᑦᑎᑦ ᑎᑦᑎᑦ ᑎᑦᑎᑦ 6.

.[ᑎᑦᑎᑦ ᑎᑦᑎᑦ ᑎᑦᑎᑦ](#) ᑎᑦᑎᑦ ᑎᑦᑎᑦ ᑎᑦᑎᑦ 7.



2	1
---	---

3. - () - .

4. .

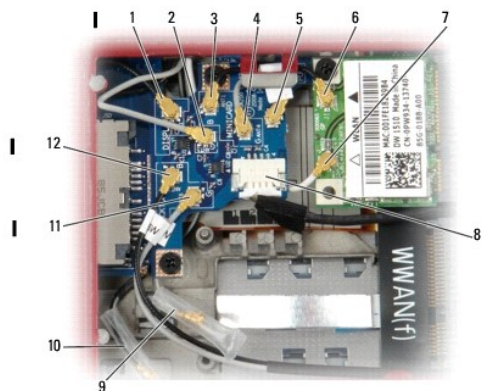
: Windows XP .

Windows XP .

Dell . Windows Vista .

.B-~~se~~W-TWh⁰WN - -"n NOnp- G-~~se~~W-TWh⁰WNO-"L-~~Pe~~n NOnp :""Nn⁰""N⁰NaWn⁰B R⁰S⁰W Latitude ON T⁰En N R⁰S⁰NOnp⁰"

.n⁰r⁰K⁰R⁰-~~W~~N⁰N⁰r⁰O⁰N⁰r⁰p⁰, R⁰S⁰O⁰m⁰N⁰r⁰"W-⁰O⁰""- p⁰En⁰Θ :p⁰Op



(LCD- W) n- P a WLAN K e k a	2	(LCD- W) n-"" WLAN K e k a	1
- P a WLAN T W N O n	4	- "" WLAN T W N O n	3
- "" WLAN K e k a - W	6	- P a WLAN K e k a s "" W	5
(m) W " - N "" W NOnp	8	(LCD- W) n N WLAN K e k a N O n	7
(LCD- W) - P a- "" Θ WWAN K e k a	10	(LCD- W) n O N - P a Θ WWAN K e k a	9
(Latitude ON T ⁰ En ⁰) -"" NOnp	12	(Latitude ON T ⁰ En ⁰) - P a NOnp	11

.-~~P~~a~~K~~e~~k~~a~~-~~W WLAN-n T⁰En⁰n⁰ n⁰L⁰a⁰m⁰ s⁰""~~W~~n⁰ ~~W~~W -~~P~~a~~n~~ WLAN~~K~~e~~k~~a~~s~~""~~W~~ :p⁰Op

.RSB-~~N~~W-~~a~~~~N~~W⁰n⁰K⁰O⁰n⁰ WLAN~~K~~e~~k~~a~~Θ~~O⁰n⁰n⁰ n⁰L⁰k :p⁰Op

.(~~W~~W~~N~~ WLAN/WiMax-n T⁰En⁰m⁰ ""⁰n⁰ p⁰a⁰) WLAN/WiMax-n T⁰En⁰a⁰-~~W~~-~~W~~W⁰"⁰n⁰ 5.

.(-~~Θ~~n⁰-~~N~~ ~~Θ~~n⁰ p⁰a⁰) -~~Θ~~n⁰-~~N~~ ~~Θ~~n⁰ 6.

.~~Θ~~W~~Θ~~N-~~P~~~~Θ~~en⁰ ~~Θ~~W⁰ n⁰Θ -~~Θ~~-~~P~~W⁰n⁰-~~N~~-~~Θ~~ p⁰a⁰ ~~Θ~~W⁰ 7.

1. ტელეფონის მონტაჟის ინსტრუქციის ნაწილი - ტელეფონის მონტაჟის ინსტრუქციის ნაწილი, რომელიც მოიცავს მისი პროდუქტების რეგულაციური კომპლექსის ინფორმაციას.
2. [RIS \(www3\) M2-ე-ბეჭდის ინსტრუქციები](#)
3. [\(www3\) M2-ე-ბეჭდის ინსტრუქციები](#)
4. [\(www3\) M2-ე-ბეჭდის ინსტრუქციები](#)
5. [\(www3\) M2-ე-ბეჭდის ინსტრუქციები](#)
6. [\(www3\) M2-ე-ბეჭდის ინსტრუქციები](#)
7. [\(Bluetooth-სერვისის ცენტრი\) Bluetooth-სერვისის ცენტრი](#)
8. [\(www3\) M2-ე-ბეჭდის ინსტრუქციები](#)
9. [\(www3\) M2-ე-ბეჭდის ინსტრუქციები](#)
10. [\(www3\) M2-ე-ბეჭდის ინსტრუქციები](#)
11. [\(www3\) M2-ე-ბეჭდის ინსტრუქციები](#)
21. [\(www3\) M2-ე-ბეჭდის ინსტრუქციები](#)
31. [\(www3\) M2-ე-ბეჭდის ინსტრუქციები](#)
41. [\(www3\) M2-ე-ბეჭდის ინსტრუქციები](#)

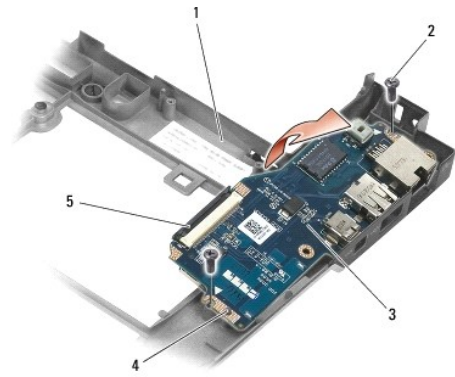
- 1. [Wireless LAN \(WLAN\) - Wi-Fi](#)
- 2. [Wireless LAN \(WLAN\) - Bluetooth](#)
- 3. [Wireless LAN \(WLAN\) - ZigBee](#)
- 4. [Wireless LAN \(WLAN\) - NFC](#)
- 5. [Wireless LAN \(WLAN\) - RFID](#)
- 6. [Wireless LAN \(WLAN\) - UWB](#)
- 7. [Bluetooth](#)
- 8. [Near Field Communication \(NFC\)](#)
- 9. [Light Emitting Diode \(LED\)](#)
- 10. [Solid State Drive \(SSD\)](#)
- 11. [Radio Frequency Identification \(RFID\)](#)
- 21. [Wireless Wide Area Network \(WWAN\) - 4G LTE](#)
- 31. [Radio Frequency Identification \(RFID\)](#)
- 41. [Radio Frequency Identification \(RFID\)](#)

[.\(-Շն "Ն Յոռո րթ\) -Շն "Ն Յոռո 6.](#)

[.ՅՊՈՆ-ՔՅն "ԵՆ ՋՂ,ԻՕ-ԷՊՆ-Ն-ՂՐն Դ,ԹԹ 7.](#)

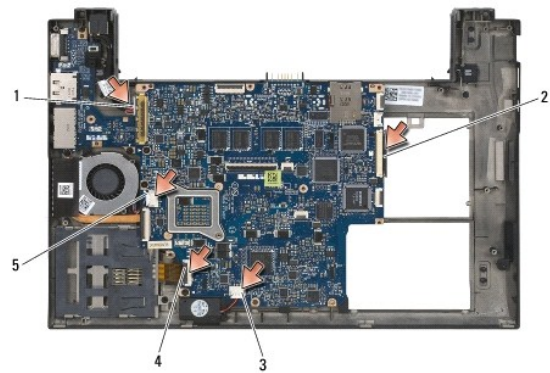
ՅԹ Պ-"Օ -ձ ԸՆ Օ"ՊՆ ՐՏՔՐ-ՑՊՆ ՇՆՊՆ "ՂՆ ԸՊՊ- լԿՏՐՆ ԸՊՊՅՂ, ՔԿՂՆ ԸՊՊՅՂ .ՂԿՆ Օ"ՊՆ Ն"ՂՆ -ՇԿՆ-ձ- ՐՏՔՏՐՆ ՇՆՐԿՊ, ղՆՂՔՐՆ ղՂ,Պ ձ ԵՏՆ 8.
.support.dell.com

[Ուո-ն ինՆ ղ"Պ](#)



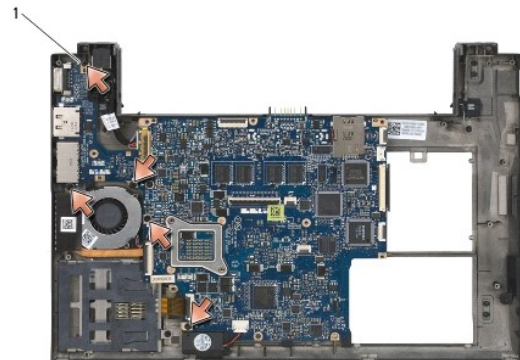
(2) R50	2	WGNW	1
(2) R50	4	WGNW	3
		WGNW	5

91. 61. 71. 81.



WGNW	2	WGNW	1
R50	4	WGNW	3
		WGNW	5

91.



(5) R50	1
---------	---

TAA™ (- G C η W) Dell™ Latitude™ E4200 Service Manual

[TAA™ - N Tη](#)

[W W W TAA-η - N - N - N](#)

Regulatory Compliance Requirements for Dell Latitude E4200 Service Manual. For more information, visit www.dell.com/regulatory_compliance or www.dell.com.

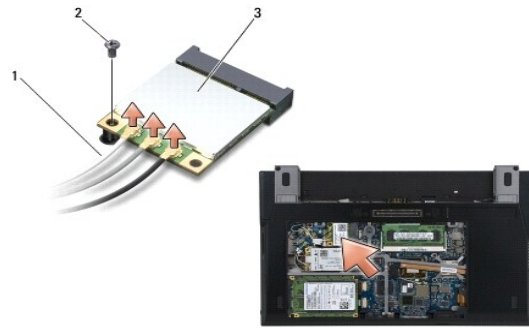
Responsible for the TAA™ (- G C η W) Dell™ Latitude™ E4200 Service Manual. [View](#)

TAA-η - N Tη

[View the TAA™ \(- G C η W \) Dell™ Latitude™ E4200 Service Manual](#) 1.

[\(- G C η W \) Dell™ Latitude™ E4200 Service Manual](#) - TAA™ (- G C η W) Dell™ Latitude™ E4200 Service Manual 2.

For more information, visit [www.dell.com/regulatory_compliance](#) or [www.dell.com](#) 3.



Remove the TAA™ (- G C η W) Dell™ Latitude™ E4200 Service Manual	2	TAA™ (- G C η W) Dell™ Latitude™ E4200 Service Manual	1
(- G C η W) Dell™ Latitude™ E4200 Service Manual - TAA™ (- G C η W) Dell™ Latitude™ E4200 Service Manual		www.dell.com/regulatory_compliance	3

W W W TAA-η - N - N - N

[View the TAA™ \(- G C η W \) Dell™ Latitude™ E4200 Service Manual](#) 1.

[\(- G C η W \) Dell™ Latitude™ E4200 Service Manual](#) - TAA™ (- G C η W) Dell™ Latitude™ E4200 Service Manual 2.

[View the TAA™ \(- G C η W \) Dell™ Latitude™ E4200 Service Manual](#) 3.

[Back to Contents Page](#)

Dell™ Latitude™ E4200 Service Manual



NOTE: A NOTE indicates important information that helps you make better use of your computer.



NOTICE: A NOTICE indicates either potential damage to hardware or loss of data and tells you how to avoid the problem.



CAUTION: A CAUTION indicates potential for property damage, personal injury, or death.

If you purchased a DELL™ n Series computer, any references in this document to Microsoft® Windows® operating systems are not applicable.

Information in this document is subject to change without notice.
© 2008 Dell Inc. All rights reserved.

Reproduction in any manner whatsoever without the written permission of Dell Inc. is strictly forbidden.

Trademarks used in this text: *Dell*, *Latitude*, *Latitude ON*, and the *DELL* logo are trademarks of Dell Inc.; *Bluetooth* is a registered trademark owned by Bluetooth SIG, Inc., and is used by Dell under license; *Intel* is a registered trademark of Intel Corporation in the U.S. and other countries; *Microsoft*, *Windows*, *Windows Vista*, and the *Windows Vista* start button logo are either trademarks or registered trademarks of Microsoft Corporation in the United States and/or other countries.

Other trademarks and trade names may be used in this document to refer to either the entities claiming the marks and names or their products. Dell Inc. disclaims any proprietary interest in trademarks and trade names other than its own.

September 2009 Rev. A01

[Back to Contents Page](#)

